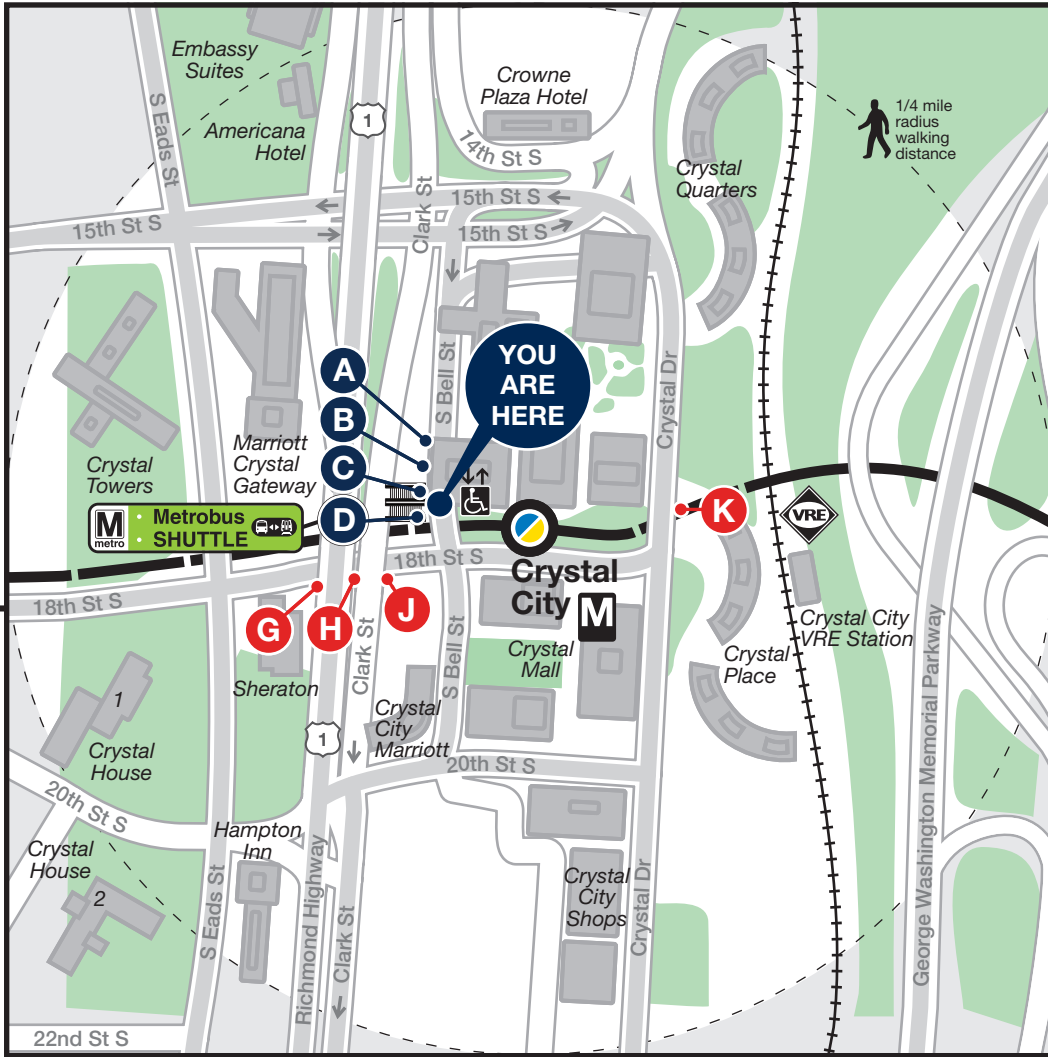




# Station Vicinity Map Crystal City



### LEGEND

**A** Bus Stop (on the street)    **A** Bus Bay (at the station)

The lettered discs on this map will help you locate the bus stop or bay near this station. Be advised the letters are not displayed on the street bus stops.

- Elevator
- Escalator
- Bus Route
- Metrorail Station and line

79.045.EVAC-0622

**D** Metrobus SHUTTLE

In the event of an emergency, this bus stop will also be served by shuttle buses.

### Approximate Walking Distance to the next Metro Station from this exit

	Distance	Time
Pentagon City	0.8 mile	16 mins

Turn right on 18th St and go 3 blocks to Hayes St. Continue on Hayes St for 4 blocks.

**Frequent service is available on selected lines. Look for the *Frequent Service* icon.**  
Buses run frequently every day between 7:00am and 9:00pm. Less frequent service runs at early morning and late night times.

## BUS SERVICE AND BOARDING LOCATIONS

Route	Destination	Board at
<b>METROBUS FREQUENT SERVICE</b>		
MWY	Braddock Rd	<b>D</b>
MWY	Pentagon City	<b>C</b>

Route	Destination	Board at
<b>METROBUS</b>		
23A	Tysons Corner Center	<b>B</b>
23A	Ballston-MU	<b>B</b>
23B		

Route	Destination	Board at
<b>ART-ARLINGTON TRANSIT</b>		
43	Court House	<b>A</b>
<b>FAIRFAX CONNECTOR</b>		
599	Reston North Park & Ride	<b>J</b>
<b>OMNIRIDE</b>		
L-200	Lake Ridge	<b>G</b>

Subject to change without notice. Esta información puede cambiar.

